

DRAFT

- ★ Release Location
- ▶ Release Flow Path



Note:
The aerial photo was acquired through the Esri Imagery Web Service.
Copyright:© 2013 National Geographic Society



DISCLAIMER:
Verdantas LLC has furnished this map to the company identified in the title block (Client) for its sole and exclusive use as a preliminary planning and screening tool and field verification is necessary to confirm these data. This map is reproduced from geospatial information compiled from third-party sources which may change over time. Areas depicted by the map are approximate and may not be accurate to mapping, surveying or engineering standards. Verdantas LLC makes no representation or guarantee as to the content, accuracy, timeliness or completeness of any information or spatial location depicted on this map. This map is provided without warranty of any kind, including but not limited to, the implied warranties of merchantability or fitness for a particular purpose. In no event will Verdantas LLC, its owners, officers, employees or agents, be liable for damages of any kind arising out of the use of this map by Client or any

November 2022

Project No. 16640

Site Locus

Client: Federated Insurance

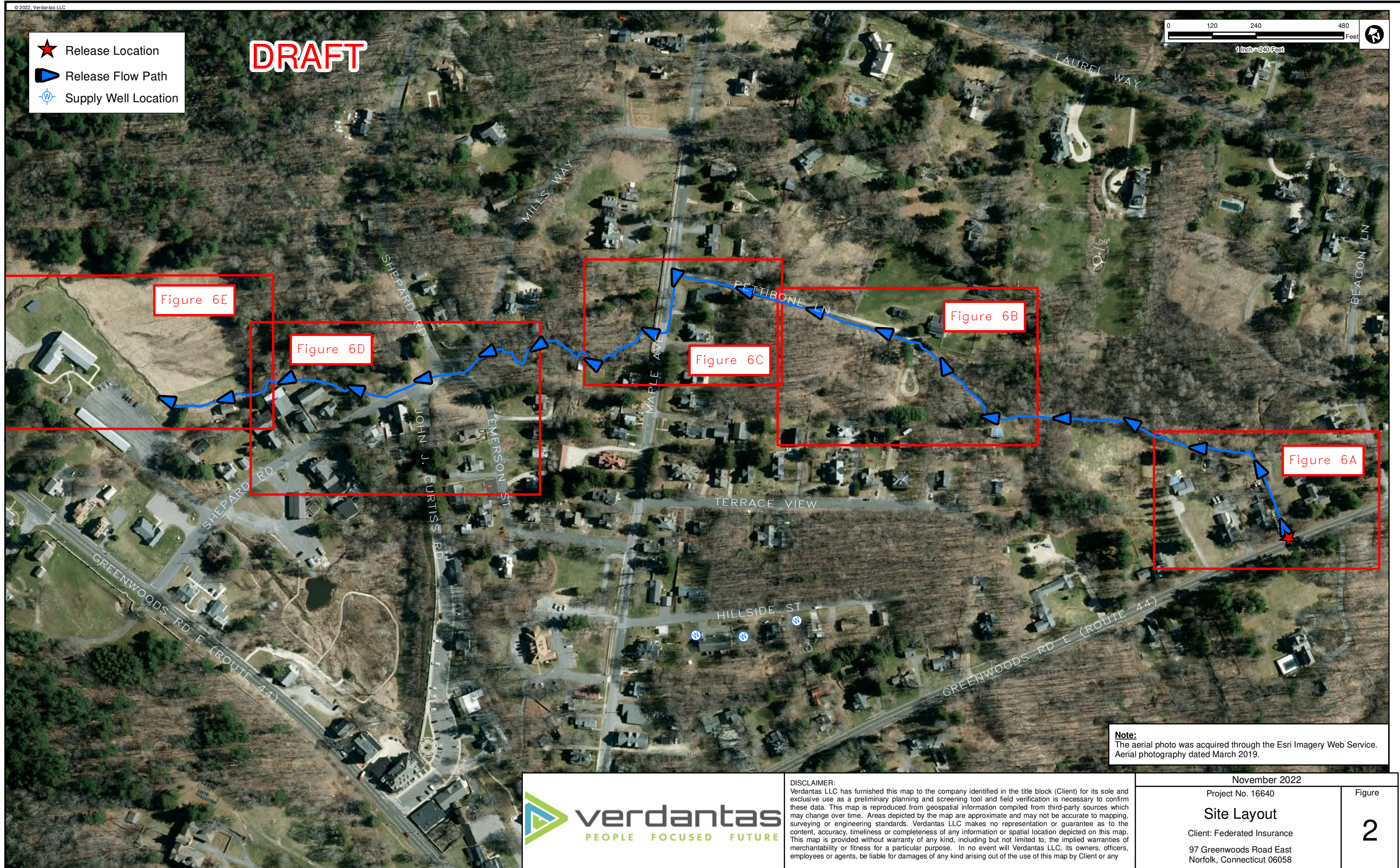
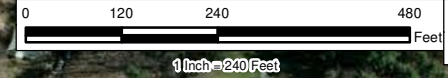
97 Greenwood Road East
Norfolk, Connecticut 06058

Figure

1

- ★ Release Location
- ▶ Release Flow Path
- ⊕ Supply Well Location

DRAFT



Note:
The aerial photo was acquired through the Esri Imagery Web Service.
Aerial photography dated March 2019.



DISCLAIMER:
Verdantas LLC has furnished this map to the company identified in the title block (Client) for its sole and exclusive use as a preliminary planning and screening tool and field verification is necessary to confirm these data. This map is reproduced from geospatial information compiled from third-party sources which may change over time. Areas depicted by the map are approximate and may not be accurate to mapping, surveying or engineering standards. Verdantas LLC makes no representation or guarantee as to the content, accuracy, timeliness or completeness of any information or spatial location depicted on this map. This map is provided without warranty of any kind, including but not limited to, the implied warranties of merchantability or fitness for a particular purpose. In no event will Verdantas LLC, its owners, officers, employees or agents, be liable for damages of any kind arising out of the use of this map by Client or any

November 2022

Project No. 16640

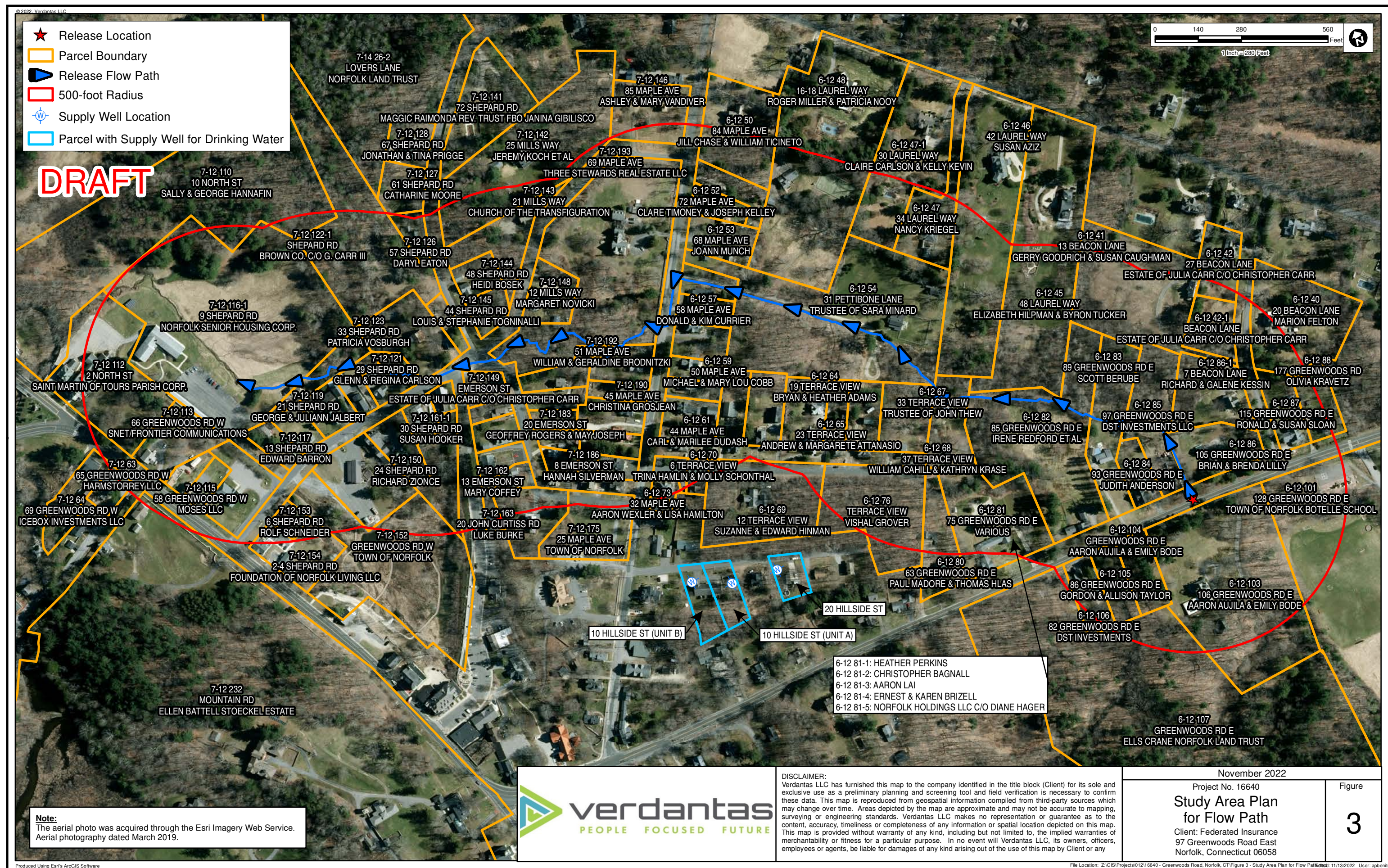
Site Layout




Client: Federated Insurance

97 Greenwood Road East
Norfolk, Connecticut 06058

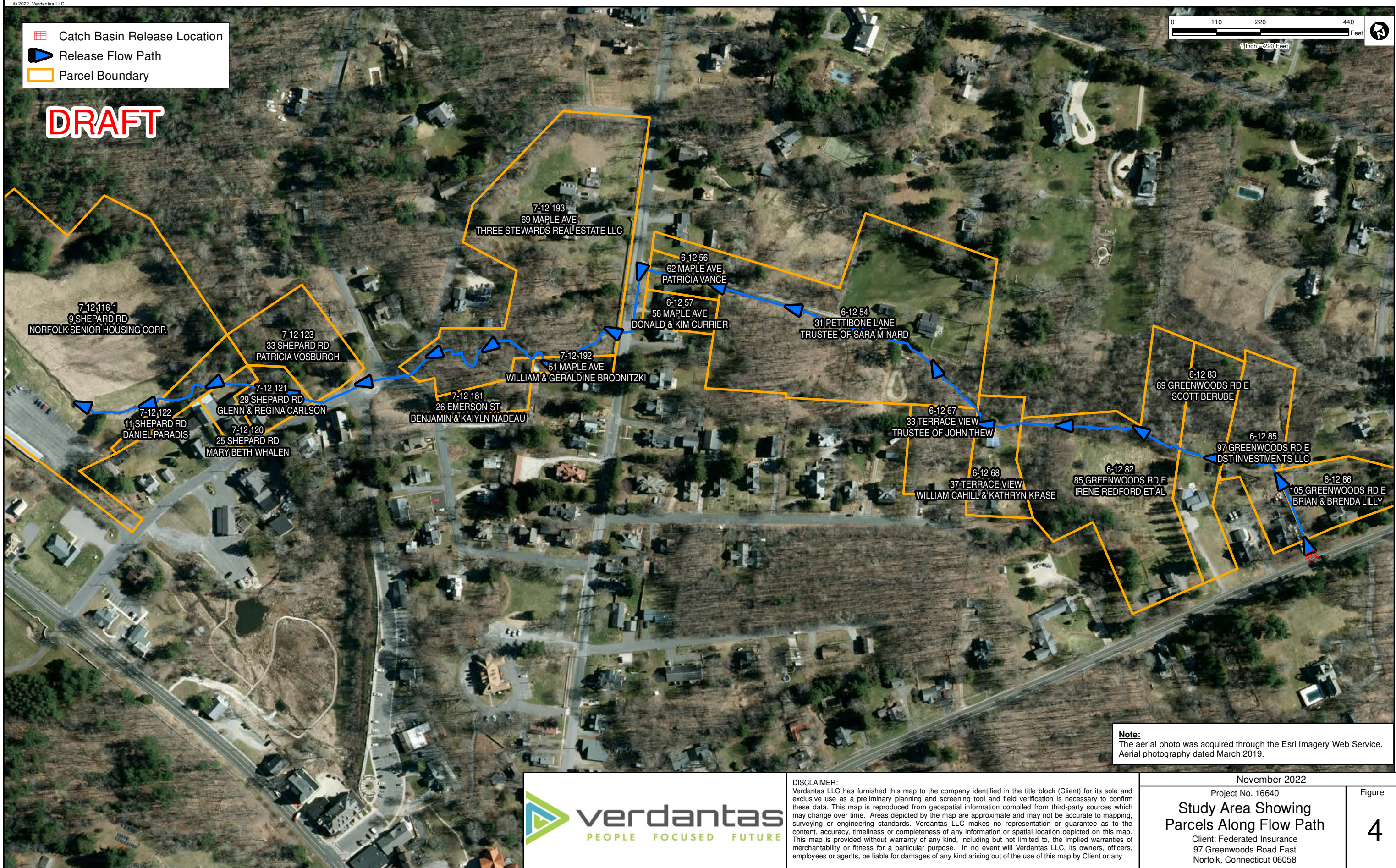
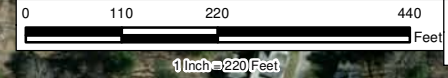
Figure

2



-  Catch Basin Release Location
-  Release Flow Path
-  Parcel Boundary

DRAFT



Note:
The aerial photo was acquired through the Esri Imagery Web Service.
Aerial photography dated March 2019.



DISCLAIMER:
Verdantas LLC has furnished this map to the company identified in the title block (Client) for its sole and exclusive use as a preliminary planning and screening tool and field verification is necessary to confirm these data. This map is reproduced from geospatial information compiled from third-party sources which may change over time. Areas depicted by the map are approximate and may not be accurate to mapping, surveying or engineering standards. Verdantas LLC makes no representation or guarantee as to the content, accuracy, timeliness or completeness of any information or spatial location depicted on this map. This map is provided without warranty of any kind, including but not limited to, the implied warranties of merchantability or fitness for a particular purpose. In no event will Verdantas LLC, its owners, officers, employees or agents, be liable for damages of any kind arising out of the use of this map by Client or any

November 2022

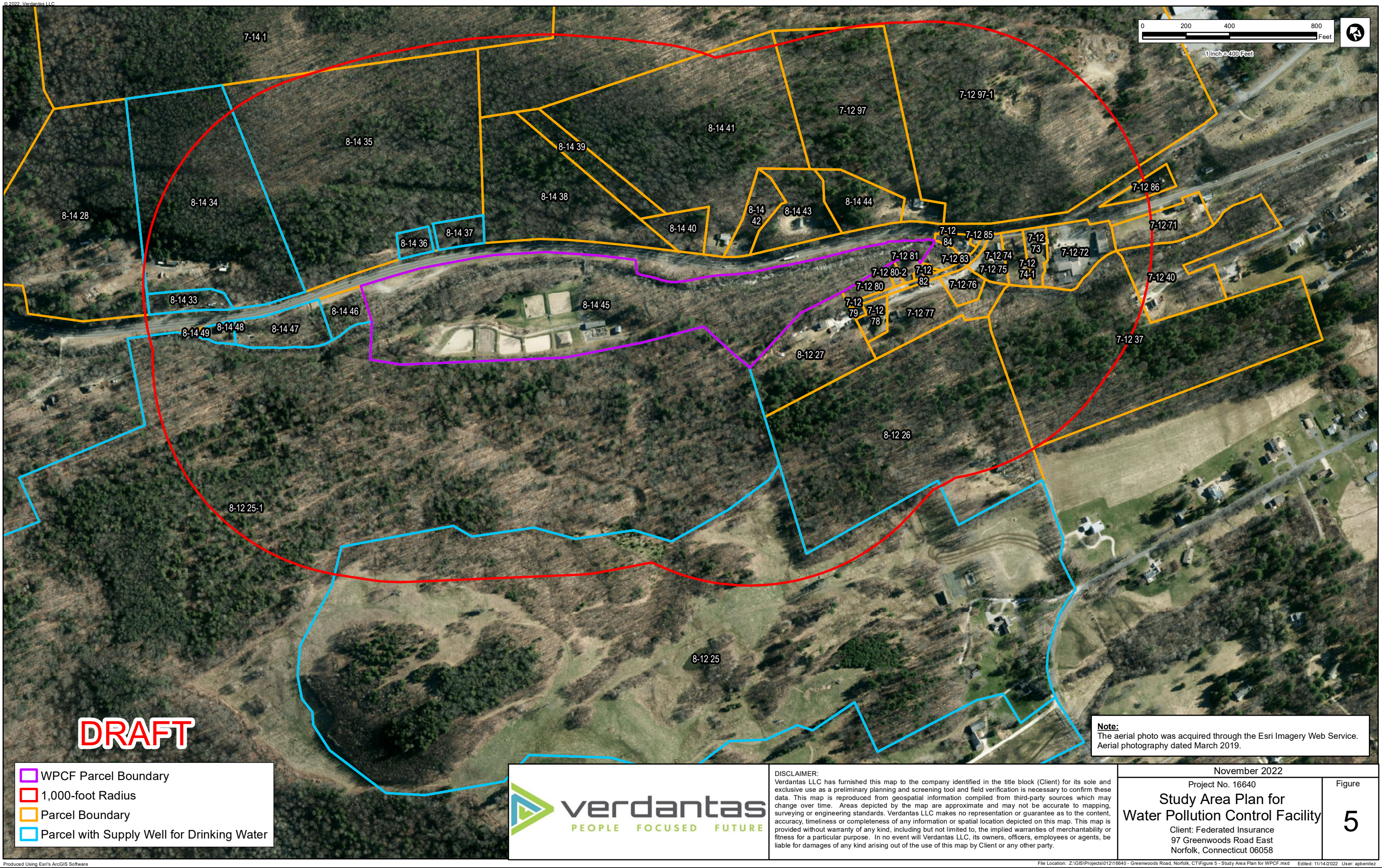
Project No. 16640

Study Area Showing Parcels Along Flow Path

Client: Federated Insurance
97 Greenwood Road East
Norfolk, Connecticut 06058

Figure

4



DRAFT

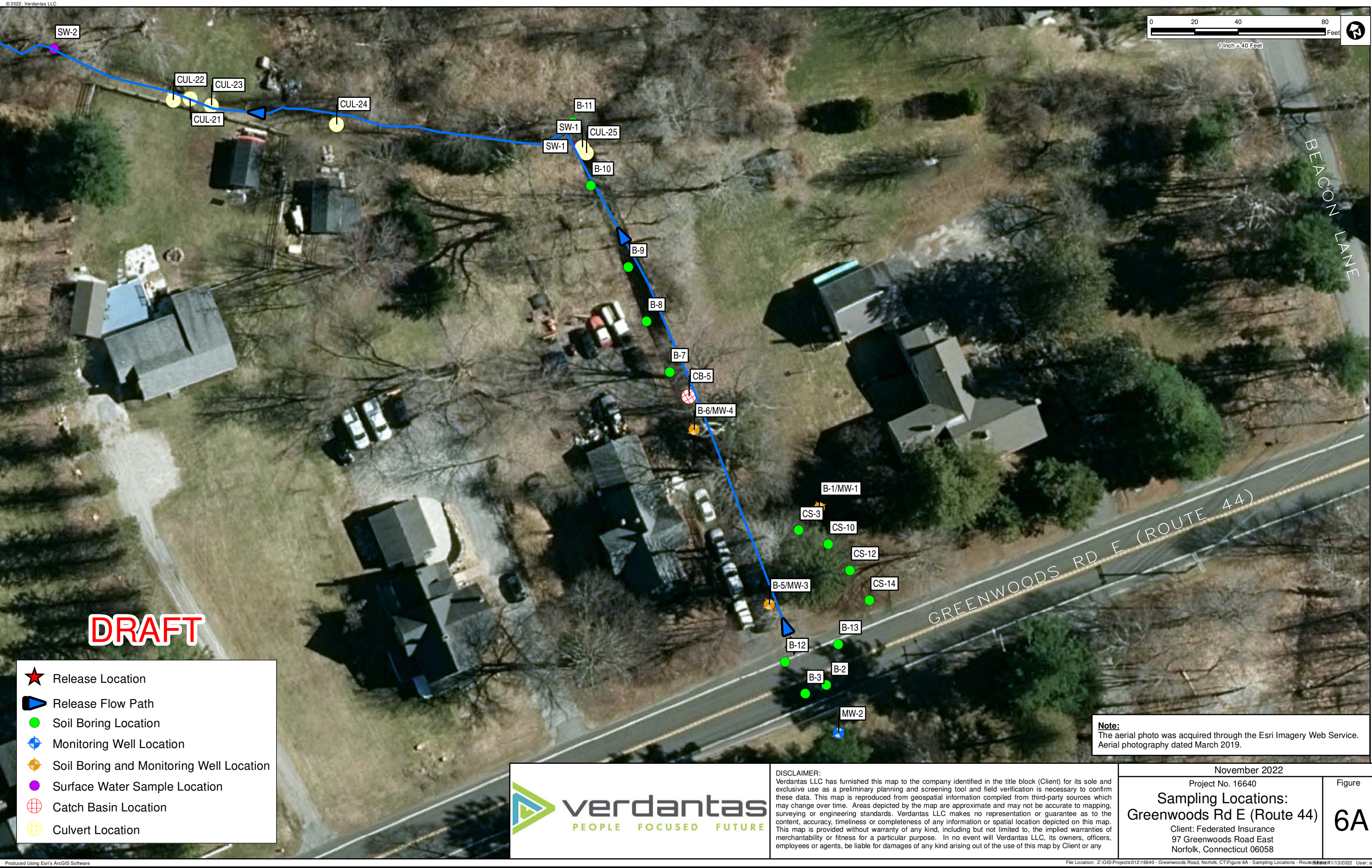
- WPCF Parcel Boundary
- 1,000-foot Radius
- Parcel Boundary
- Parcel with Supply Well for Drinking Water



DISCLAIMER:
Verdantas LLC has furnished this map to the company identified in the title block (Client) for its sole and exclusive use as a preliminary planning and screening tool and field verification is necessary to confirm these data. This map is reproduced from geospatial information compiled from third-party sources which may change over time. Areas depicted by the map are approximate and may not be accurate to mapping, surveying or engineering standards. Verdantas LLC makes no representation or guarantee as to the content, accuracy, timeliness or completeness of any information or spatial location depicted on this map. This map is provided without warranty of any kind, including but not limited to, the implied warranties of merchantability or fitness for a particular purpose. In no event will Verdantas LLC, its owners, officers, employees or agents, be liable for damages of any kind arising out of the use of this map by Client or any other party.

Note:
The aerial photo was acquired through the Esri Imagery Web Service. Aerial photography dated March 2019.

November 2022	
Project No. 16640	
Study Area Plan for Water Pollution Control Facility	
Client: Federated Insurance 97 Greenwood Road East Norfolk, Connecticut 06058	
Figure	5



- ★ Release Location
- ▶ Release Flow Path
- Soil Boring Location
- ⊕ Monitoring Well Location
- ⊕ Soil Boring and Monitoring Well Location
- Surface Water Sample Location
- ⊕ Catch Basin Location
- ⊕ Culvert Location

Note:
The aerial photo was acquired through the Esri Imagery Web Service.
Aerial photography dated March 2019.







DISCLAIMER:
Verdantas LLC has furnished this map to the company identified in the title block (Client) for its sole and exclusive use as a preliminary planning and screening tool and field verification is necessary to confirm these data. This map is reproduced from geospatial information compiled from third-party sources which may change over time. Areas depicted by the map are approximate and may not be accurate to mapping, surveying or engineering standards. Verdantas LLC makes no representation or guarantee as to the content, accuracy, timeliness or completeness of any information or spatial location depicted on this map. This map is provided without warranty of any kind, including but not limited to, the implied warranties of merchantability or fitness for a particular purpose. In no event will Verdantas LLC, its owners, officers, employees or agents, be liable for damages of any kind arising out of the use of this map by Client or any

November 2022		
Project No. 16640		Figure
Sampling Locations:		6A
Greenwoods Rd E (Route 44)		
Client: Federated Insurance		
97 Greenwoods Road East		
Norfolk, Connecticut 06058		



Note:
The aerial photo was acquired through the Esri Imagery Web Service.
Aerial photography dated March 2019.

-  Release Flow Path
-  Soil Boring and Monitoring Well Location
-  Surface Water Sample Location
-  Culvert Location



DISCLAIMER:
Verdantas LLC has furnished this map to the company identified in the title block (Client) for its sole and exclusive use as a preliminary planning and screening tool and field verification is necessary to confirm these data. This map is reproduced from geospatial information compiled from third-party sources which may change over time. Areas depicted by the map are approximate and may not be accurate to mapping, surveying or engineering standards. Verdantas LLC makes no representation or guarantee as to the content, accuracy, timeliness or completeness of any information or spatial location depicted on this map. This map is provided without warranty of any kind, including but not limited to, the implied warranties of merchantability or fitness for a particular purpose. In no event will Verdantas LLC, its owners, officers, employees or agents, be liable for damages of any kind arising out of the use of this map by Client or any

November 2022

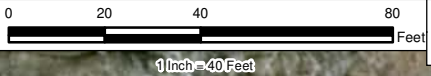
Project No. 16640

Sampling Locations:
Pettibone Lane

Client: Federated Insurance
97 Greenwood Road East
Norfolk, Connecticut 06058

Figure

6B



Note:
The aerial photo was acquired through the Esri Imagery Web Service.
Aerial photography dated March 2019.

- Release Flow Path
- Soil Boring Location
- Monitoring Well Location
- Soil Boring and Monitoring Well Location
- Surface Water Sample Location
- Catch Basin Location
- Culvert Location



DISCLAIMER:
Verdantas LLC has furnished this map to the company identified in the title block (Client) for its sole and exclusive use as a preliminary planning and screening tool and field verification is necessary to confirm these data. This map is reproduced from geospatial information compiled from third-party sources which may change over time. Areas depicted by the map are approximate and may not be accurate to mapping, surveying or engineering standards. Verdantas LLC makes no representation or guarantee as to the content, accuracy, timeliness or completeness of any information or spatial location depicted on this map. This map is provided without warranty of any kind, including but not limited to, the implied warranties of merchantability or fitness for a particular purpose. In no event will Verdantas LLC, its owners, officers, employees or agents, be liable for damages of any kind arising out of the use of this map by Client or any

November 2022

Project No. 16640

**Sampling Locations:
Maple Avenue**

Client: Federated Insurance
97 Greenwood Road East
Norfolk, Connecticut 06058

Figure

6C



DRAFT

- Release Flow Path
- Soil Boring Location
- Soil Boring and Monitoring Well Location
- Surface Water Sample Location
- Catch Basin Location
- Culvert Location



DISCLAIMER:
Verdantas LLC has furnished this map to the company identified in the title block (Client) for its sole and exclusive use as a preliminary planning and screening tool and field verification is necessary to confirm these data. This map is reproduced from geospatial information compiled from third-party sources which may change over time. Areas depicted by the map are approximate and may not be accurate to mapping, surveying or engineering standards. Verdantas LLC makes no representation or guarantee as to the content, accuracy, timeliness or completeness of any information or spatial location depicted on this map. This map is provided without warranty of any kind, including but not limited to, the implied warranties of merchantability or fitness for a particular purpose. In no event will Verdantas LLC, its owners, officers, employees or agents, be liable for damages of any kind arising out of the use of this map by Client or any

Note:
The aerial photo was acquired through the Esri Imagery Web Service. Aerial photography dated March 2019.

November 2022

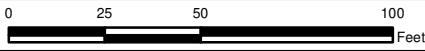
Project No. 16640

**Sampling Locations:
5-Way Intersection**

Client: Federated Insurance
97 Greenwood Road East
Norfolk, Connecticut 06058

Figure

6D



SW-9



SW-8



CUL-1



CUL-4

CUL-5




CUL-3

CUL-2

Note:

The aerial photo was acquired through the Esri Imagery Web Service. Aerial photography dated March 2019.

DRAFT

-  Release Flow Path
-  Surface Water Sample Location
-  Culvert Location



DISCLAIMER:
Verdantas LLC has furnished this map to the company identified in the title block (Client) for its sole and exclusive use as a preliminary planning and screening tool and field verification is necessary to confirm these data. This map is reproduced from geospatial information compiled from third-party sources which may change over time. Areas depicted by the map are approximate and may not be accurate to mapping, surveying or engineering standards. Verdantas LLC makes no representation or guarantee as to the content, accuracy, timeliness or completeness of any information or spatial location depicted on this map. This map is provided without warranty of any kind, including but not limited to, the implied warranties of merchantability or fitness for a particular purpose. In no event will Verdantas LLC, its owners, officers, employees or agents, be liable for damages of any kind arising out of the use of this map by Client or any

November 2022

Project No. 16640

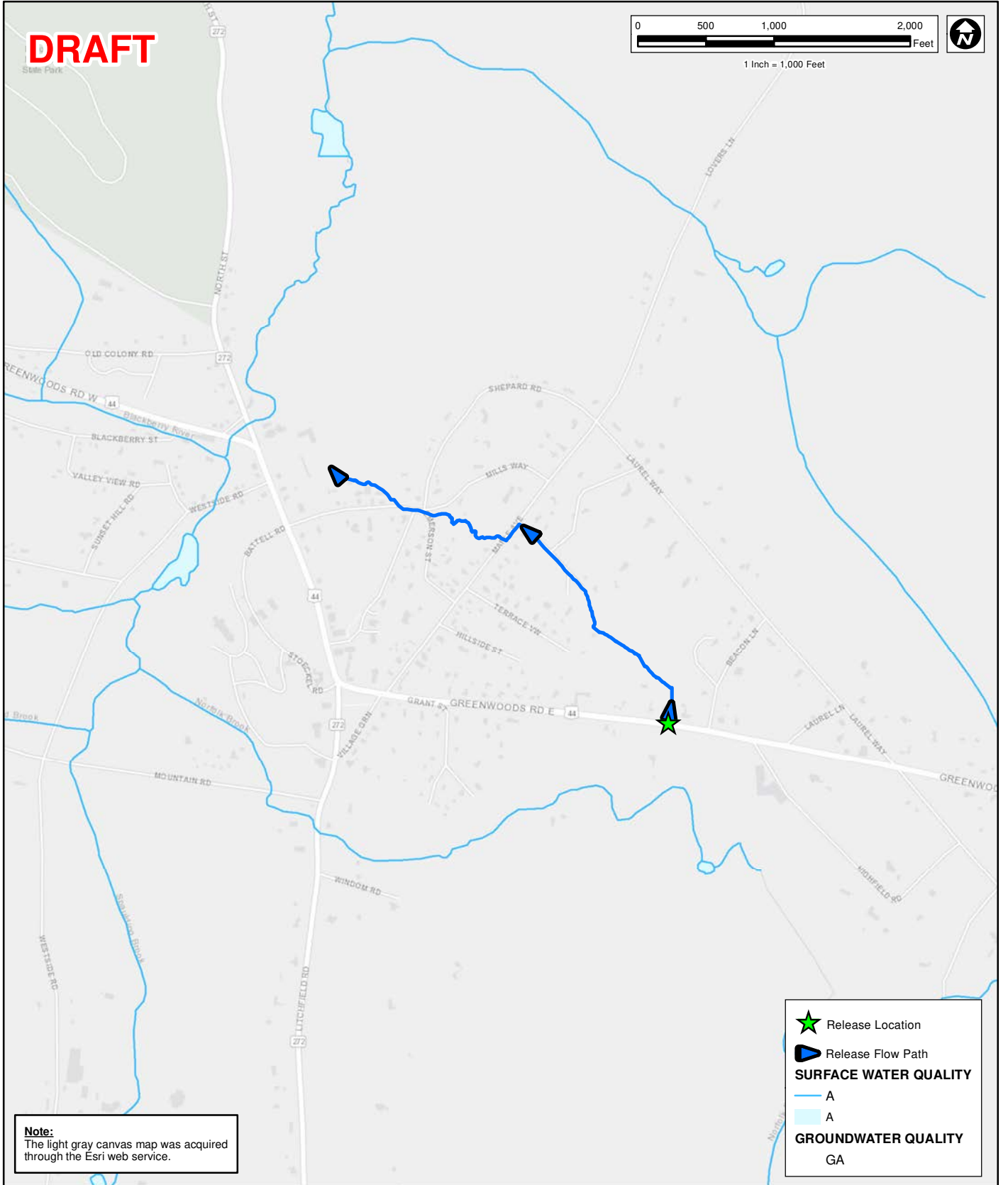
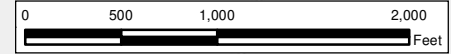
**Sampling Locations:
Norfolk Senior Housing Center**

Client: Federated Insurance
97 Greenwoods Road East
Norfolk, Connecticut 06058

Figure

6E

DRAFT



Note:
The light gray canvas map was acquired through the Esri web service.

Release Location

Release Flow Path

SURFACE WATER QUALITY
 A
 A

GROUNDWATER QUALITY
 GA



DISCLAIMER:
Verdantas LLC has furnished this map to the company identified in the title block (Client) for its sole and exclusive use as a preliminary planning and screening tool and field verification is necessary to confirm these data. This map is reproduced from geospatial information compiled from third-party sources which may change over time. Areas depicted by the map are approximate and may not be accurate to mapping, surveying or engineering standards. Verdantas LLC makes no representation or guarantee as to the content, accuracy, timeliness or completeness of any information or spatial location depicted on this map. This map is provided without warranty of any kind, including but not limited to, the implied warranties of merchantability or fitness for a particular purpose. In no event will Verdantas LLC, its owners, officers, employees or agents, be liable for damages of any kind arising out of the use of this map by Client or any other party.

November 2022

Project No. 16640

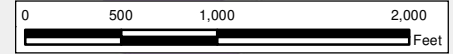
Groundwater and Surface Water Classifications

Client: Federated Insurance
97 Greenwood Road East
Norfolk, Connecticut 06058




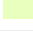
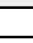
Figure

A1

DRAFT



Note:
The light gray canvas map was acquired through the Esri web service.

-  Release Location
-  Release Flow Path
-  Natural Diversity Area
-  Poorly Drained and Very Poorly Drained Soils
-  Alluvial and Floodplain Soils



DISCLAIMER:
Verdantas LLC has furnished this map to the company identified in the title block (Client) for its sole and exclusive use as a preliminary planning and screening tool and field verification is necessary to confirm these data. This map is reproduced from geospatial information compiled from third-party sources which may change over time. Areas depicted by the map are approximate and may not be accurate to mapping, surveying or engineering standards. Verdantas LLC makes no representation or guarantee as to the content, accuracy, timeliness or completeness of any information or spatial location depicted on this map. This map is provided without warranty of any kind, including but not limited to, the implied warranties of merchantability or fitness for a particular purpose. In no event will Verdantas LLC, its owners, officers, employees or agents, be liable for damages of any kind arising out of the use of this map by Client or any other party.

November 2022

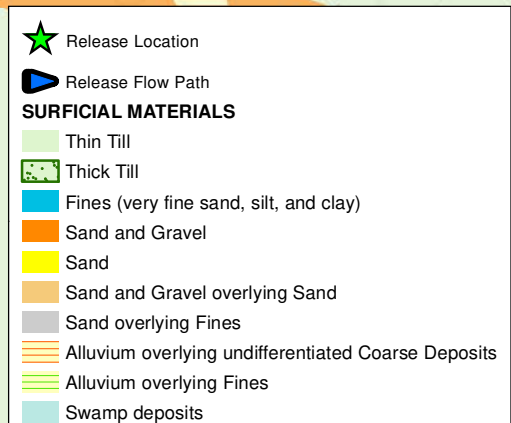
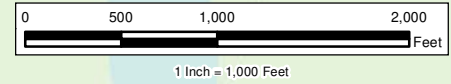
Project No. 16640

Inland Wetland Soils and Natural Diversity Areas

Client: Federated Insurance
97 Greenwood Road East
Norfolk, Connecticut 06058

Figure

A2

DRAFT

Note:
The light gray canvas map was acquired through the Esri web service.

DISCLAIMER:
Verdantas LLC has furnished this map to the company identified in the title block (Client) for its sole and exclusive use as a preliminary planning and screening tool and field verification is necessary to confirm these data. This map is reproduced from geospatial information compiled from third-party sources which may change over time. Areas depicted by the map are approximate and may not be accurate to mapping, surveying or engineering standards. Verdantas LLC makes no representation or guarantee as to the content, accuracy, timeliness or completeness of any information or spatial location depicted on this map. This map is provided without warranty of any kind, including but not limited to, the implied warranties of merchantability or fitness for a particular purpose. In no event will Verdantas LLC, its owners, officers, employees or agents, be liable for damages of any kind arising out of the use of this map by Client or any other party.

November 2022

Project No. 16640

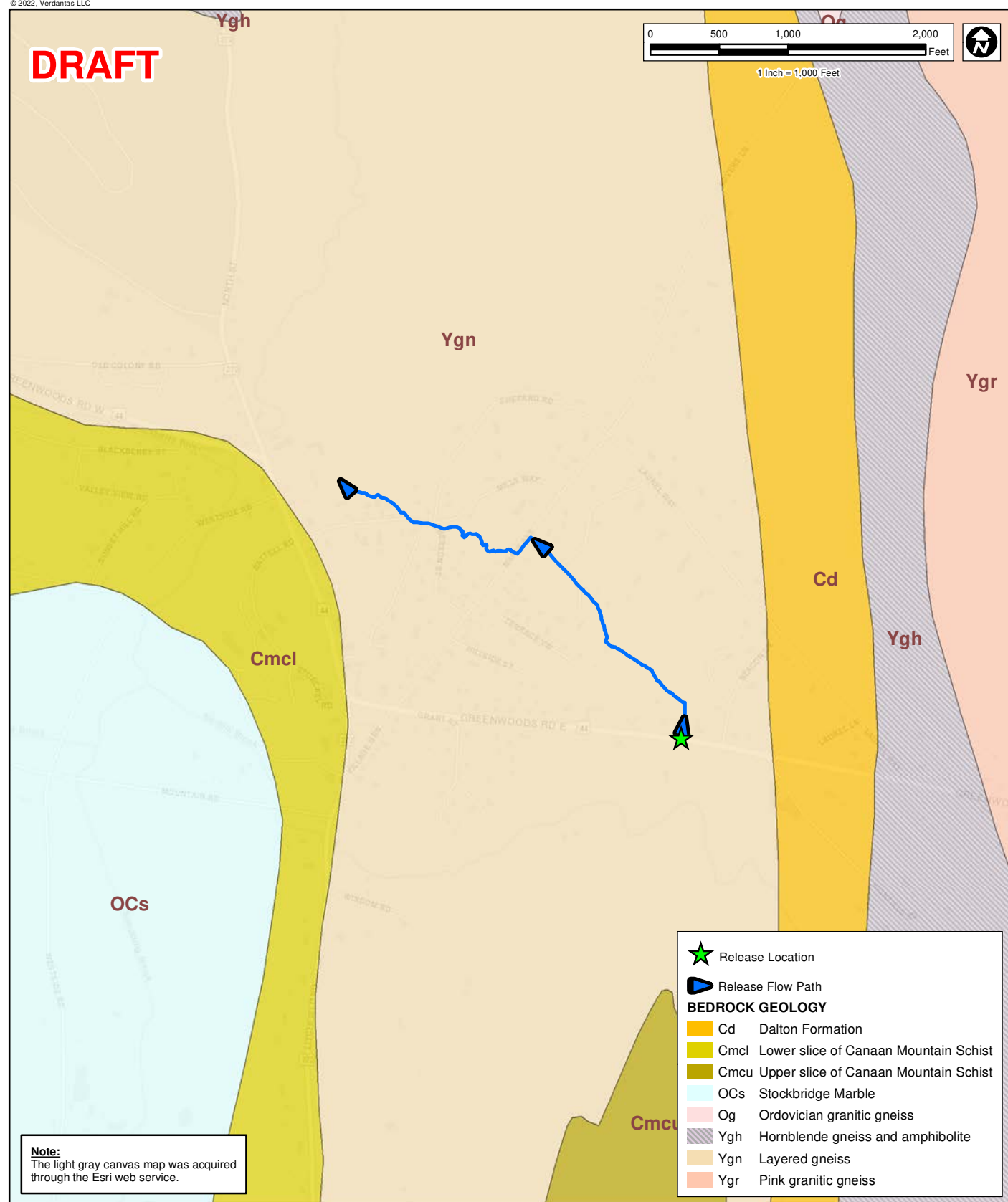
Surficial Materials

Client: Federated Insurance

97 Greenwoods Road East
Norfolk, Connecticut 06058

Figure

A3



Note:
The light gray canvas map was acquired through the Esri web service.

DISCLAIMER: Verdantus LLC has furnished this map to the company identified in the title block (Client) for its sole and exclusive use as a preliminary planning and screening tool and field verification is necessary to confirm these data. This map is reproduced from geospatial information compiled from third-party sources which may change over time. Areas depicted by the map are not intended to be and are not accurate to mapping, surveying or engineering standards. Verdantus LLC makes no representation or guarantee as to the content, accuracy, timeliness or completeness of any information or spatial location depicted on this map. This map is provided without warranty of any kind, including but not limited to, the implied warranties of merchantability or fitness for a particular purpose. The user assumes all liability for its use. Officers, employees or agents, be liable for damages of any kind arising out of the use of this map by Client or any other party.

November 2022

Project No. 16640

Bedrock Geology

Client: Federated Insurance
97 Greenwoods Road East
Norfolk, Connecticut 06058

Figure

A4