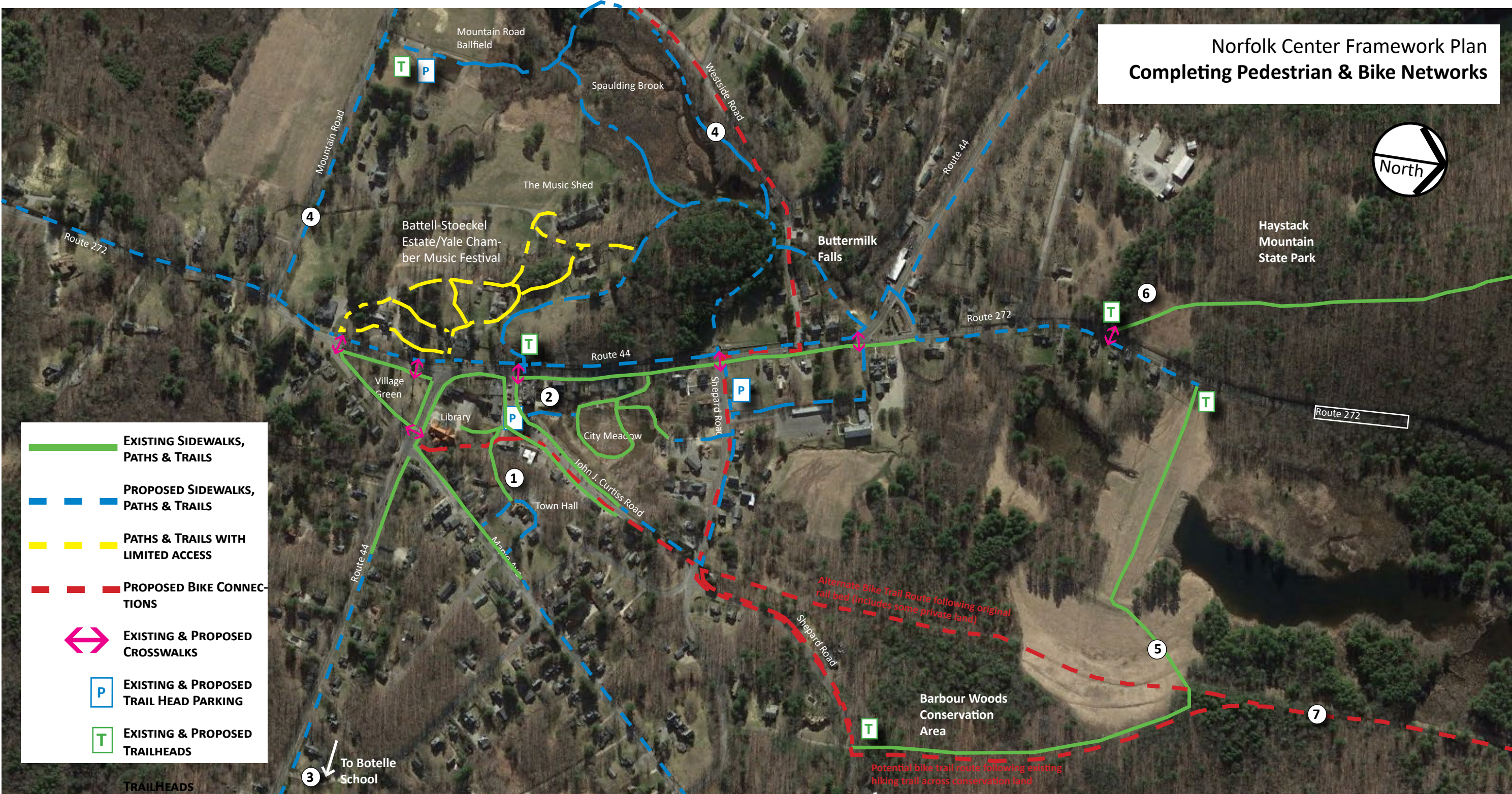


Norfolk Center Framework Plan Completing Pedestrian & Bike Networks



COMPLETING THE PEDESTRIAN SYSTEM
Sidewalks already exist through much of the core “village campus,” but there are critical gaps, and connections are lacking to outlying streets, parks and conservation areas. Needed improvements include improving the existing path from Station Place to the Town Hall (1), and connecting Robertson Plaza to the boardwalks at City Meadow (2). Sidewalks, paths or other pedestrian improvements are needed to allow for safe walking from the village core to outlying neighborhoods, especially East along Route 44 to the Botelle School (3). Crosswalks need to be improved or added in several locations (↔) to make the system truly functional.

CONNECTING TO NATURAL AREAS
As described earlier, establishing public trails through the Battell-Stoeckel Estate could greatly enhance opportunities for walking: at a minimum a loop along Spaulding Brook and Mountain Street (4) could provide some access to the area, with minimal interference with activities on the estate. North of the Village, existing trails through Barbour Woods (5) and Haystack Mountain State Park (6) could be linked to the village with sidewalks or paths along Shepard Road and Route 272.

BIKE TRAILS AND ON-ROAD ROUTES
Norfolk’s rural roads are already actively used by bicyclists and for the most part are functional. Where they funnel through Norfolk Center, however, conflicts between bikes, vehicles and pedestrians become more dangerous. Delineation of on-road routes through the village on Shepard Road and Westside Road would provide a better East-West Connection. Linking the proposed Norfolk Rail Trail (7) along John J. Curtis Road to the Village Green would provide safe access to the Center from the North.

PARKING AND WAYFINDING SIGNAGE TO SUPPORT THE VISITOR EXPERIENCE
An effective walking and bike trail system will make clear where visitors are welcome to park and provide clear information at parking areas and trailheads (T). Vehicular signage should distinguish parking areas that serve trailheads (P) from other village parking lots, and provide direction to key destinations.